



Roman regional bling? Wirral Brooches in their wider context

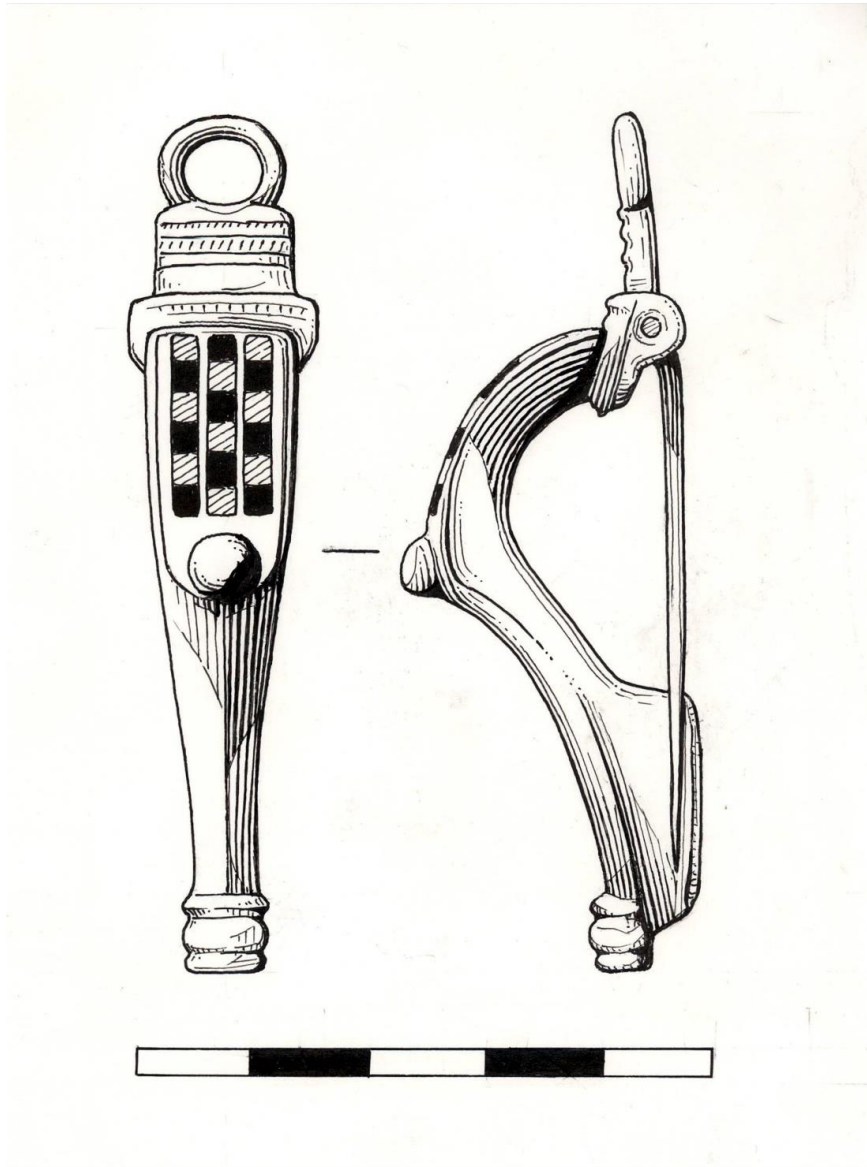
Dr Frances McIntosh

Curator of Collections and Interiors, Hadrian's Wall and the North East

English Heritage

Project Aims

- To create a detailed **catalogue** of all known brooches of this type;
- To create a **typology and standardized terminology** of this brooch consistent with existing brooch typologies;
- To discover the likely **geographic origins** of the form;
- To carry out **scientific analysis** on the brooches to determine the metallurgical diversity in which the form was manufactured, and further relate this to the area of the brooch's production and distribution.



Key Characteristics

Stepped head-sometimes with enamel

Three vertical panels infilled with squares of alternating colours of enamel

Boss at knee/waist-sometimes decorated

Headloop

Steep profile

Typical Wirral brooch-enamel lost

Colours used in enamel	
Orange	White
Red	Yellow
Blue	Green

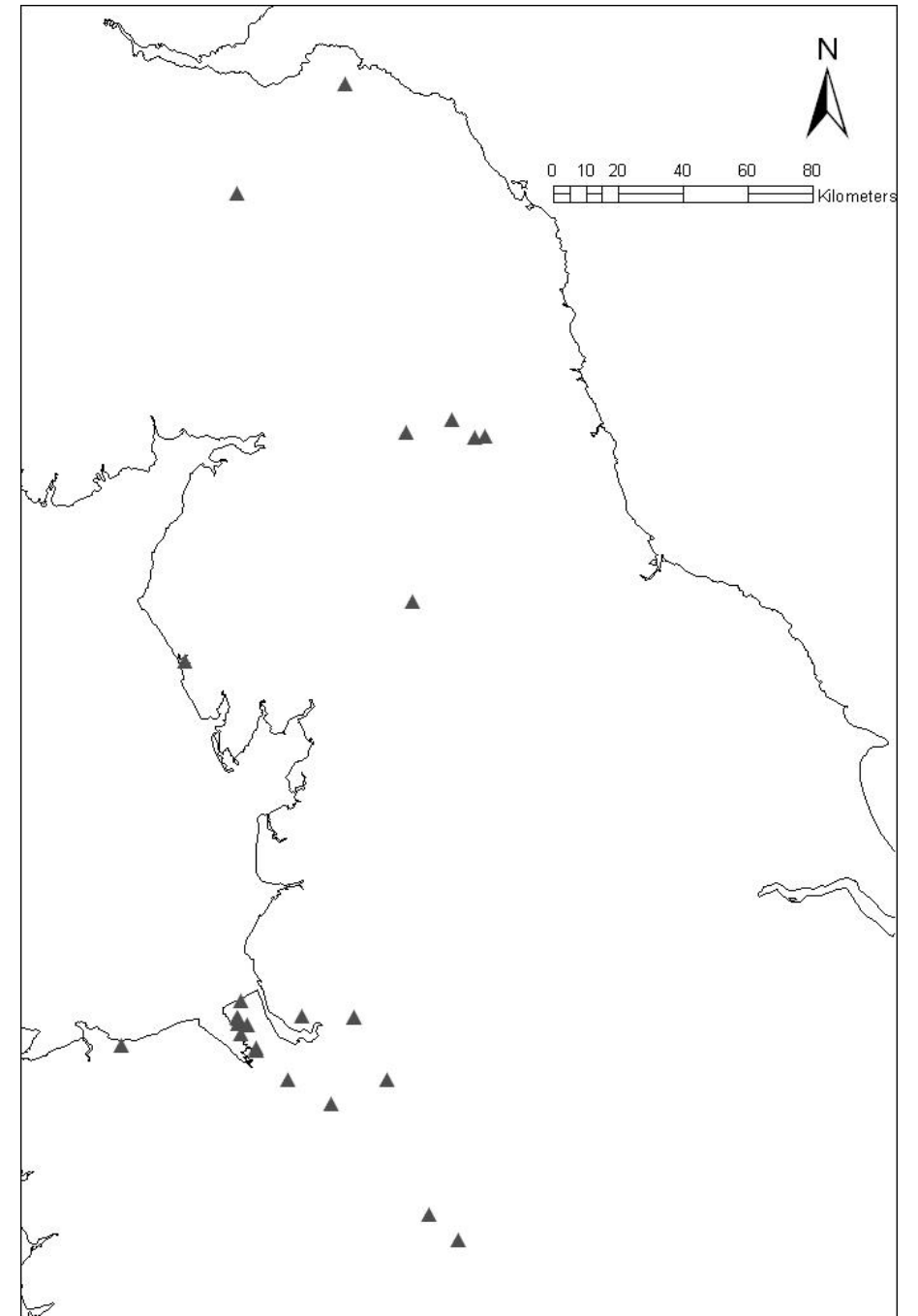
A photograph of three Wirral brooches, one straight and two curved, with a scale bar to their left. The straight brooch shows the stepped head and three vertical enamel panels. The curved brooches show the steep profile and the placement of the head and base.



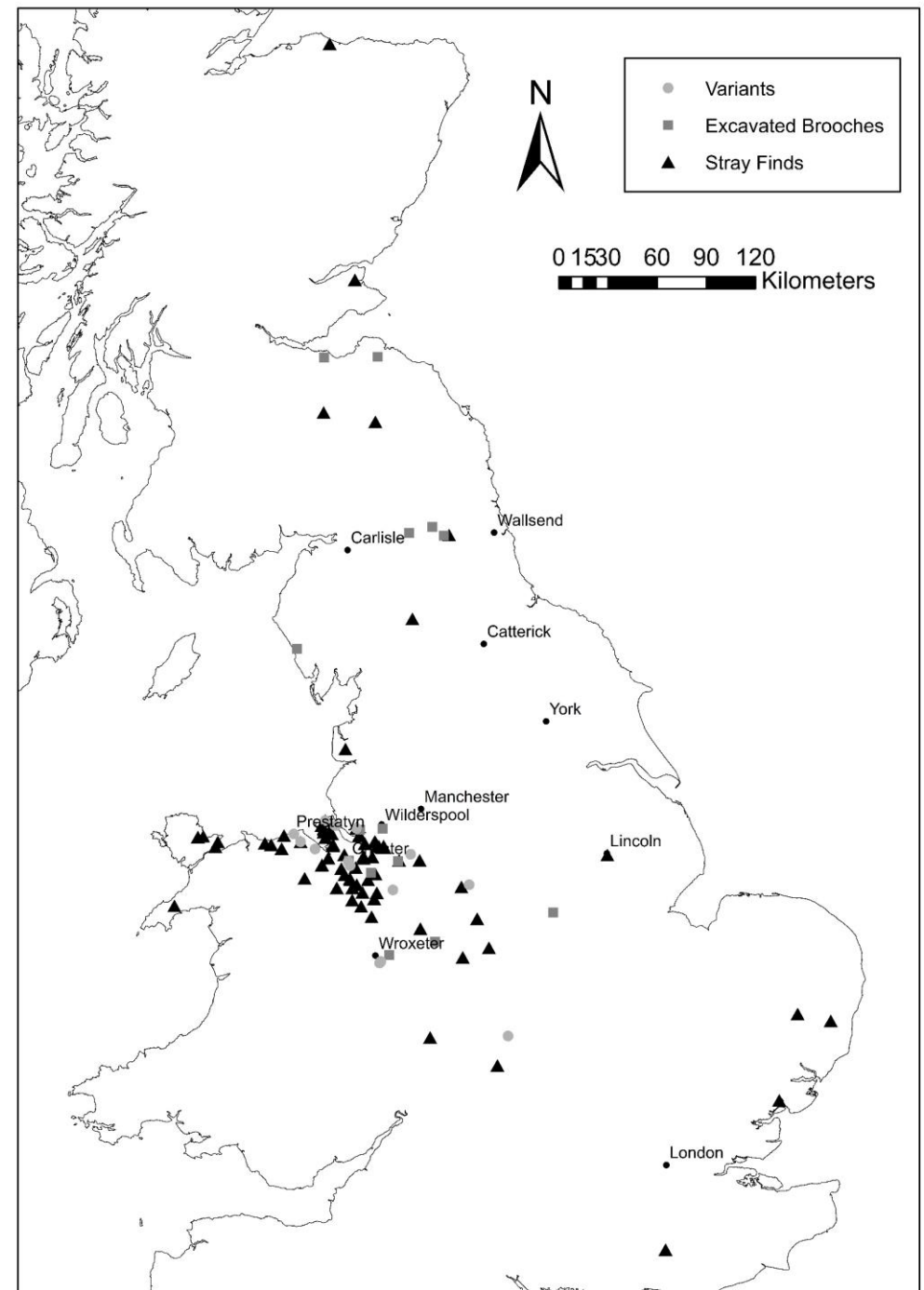
m

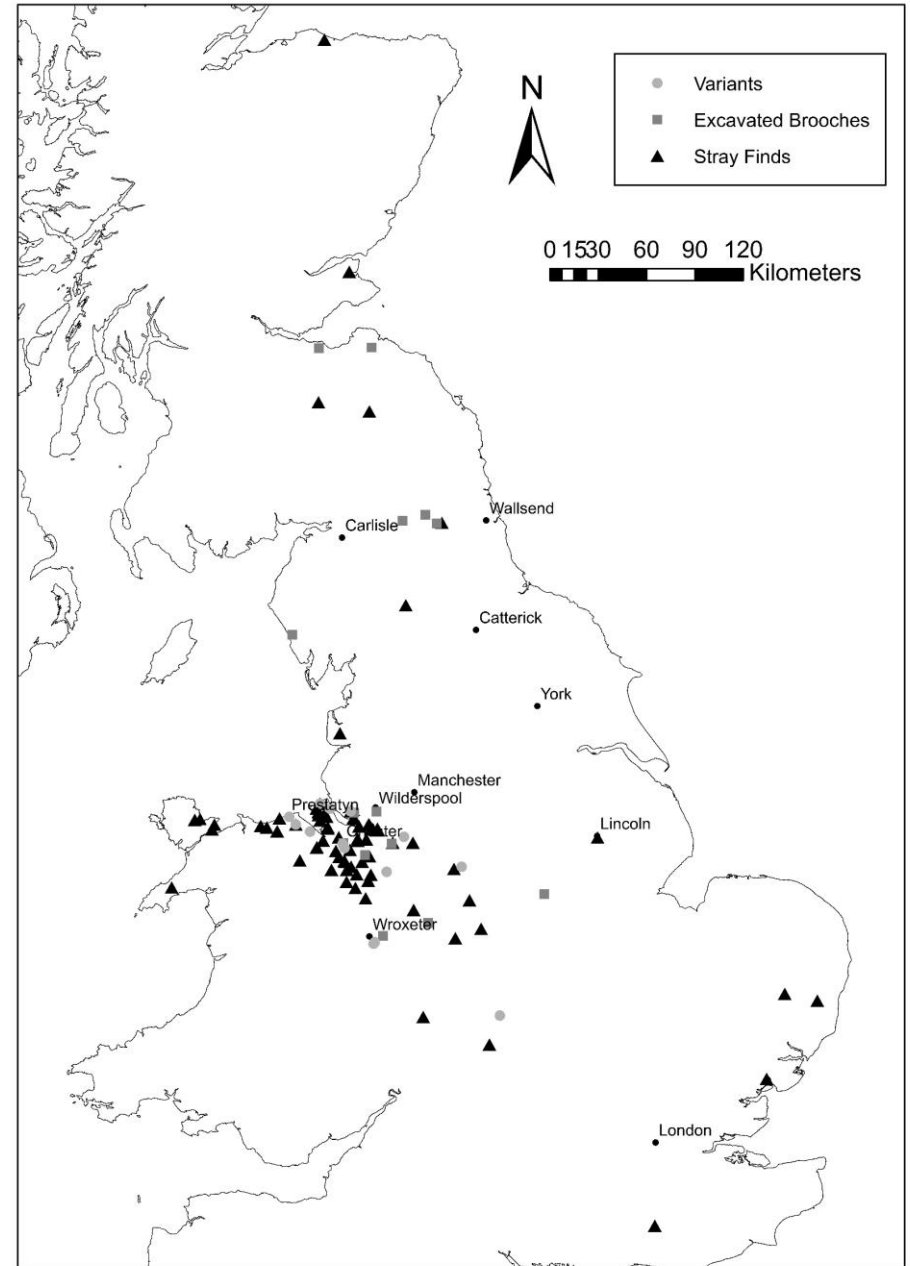
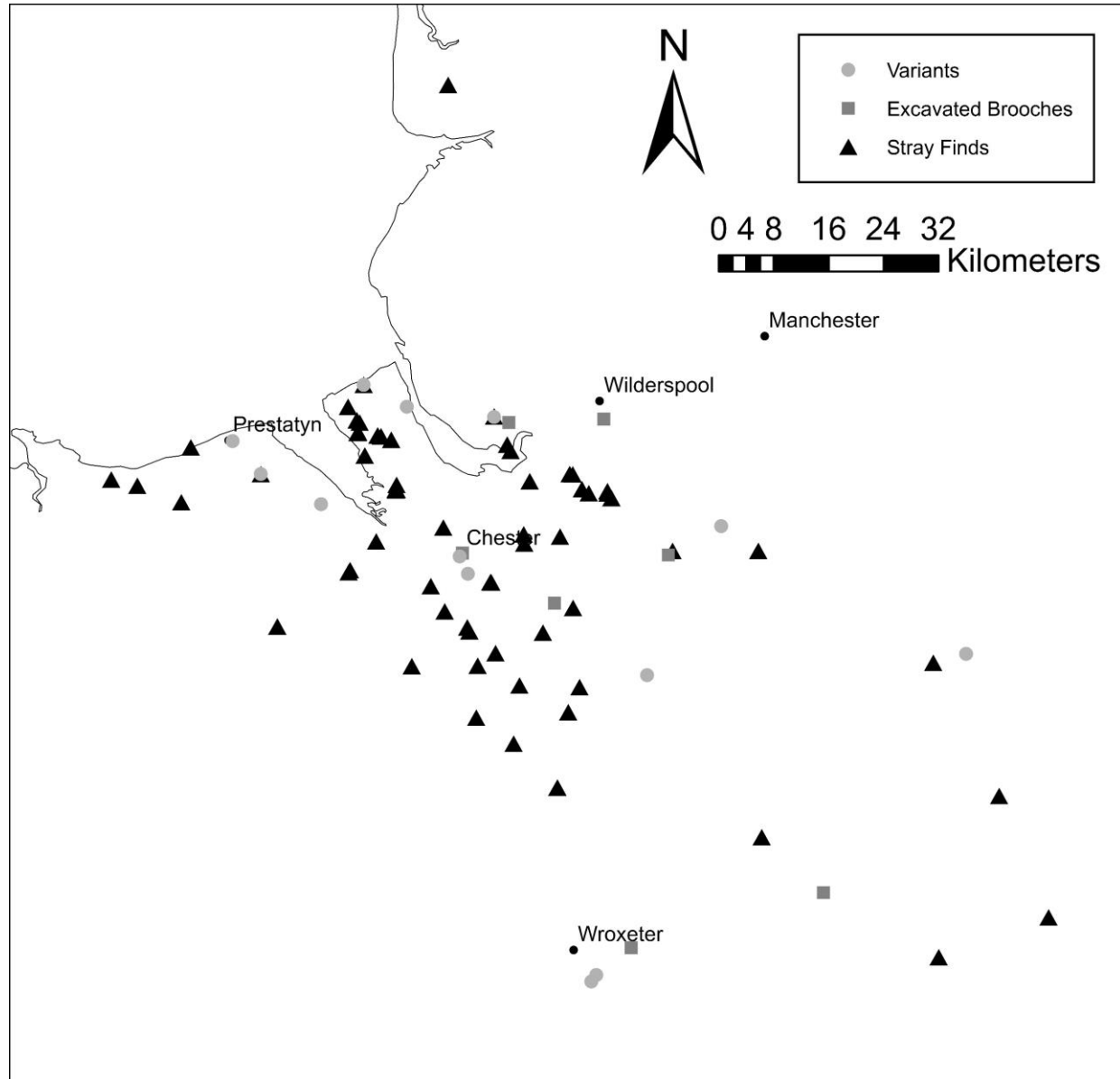
Philpott 1999

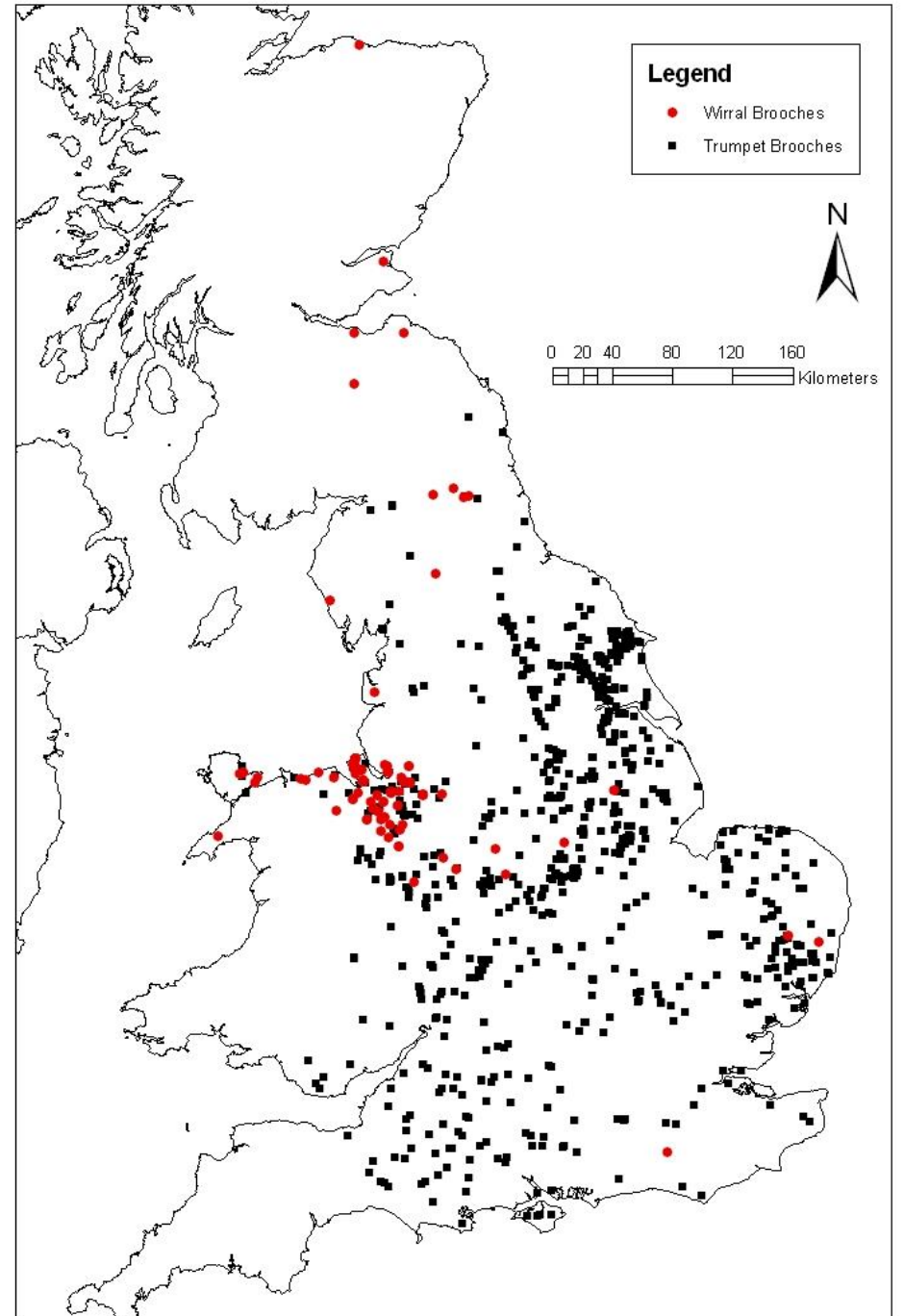
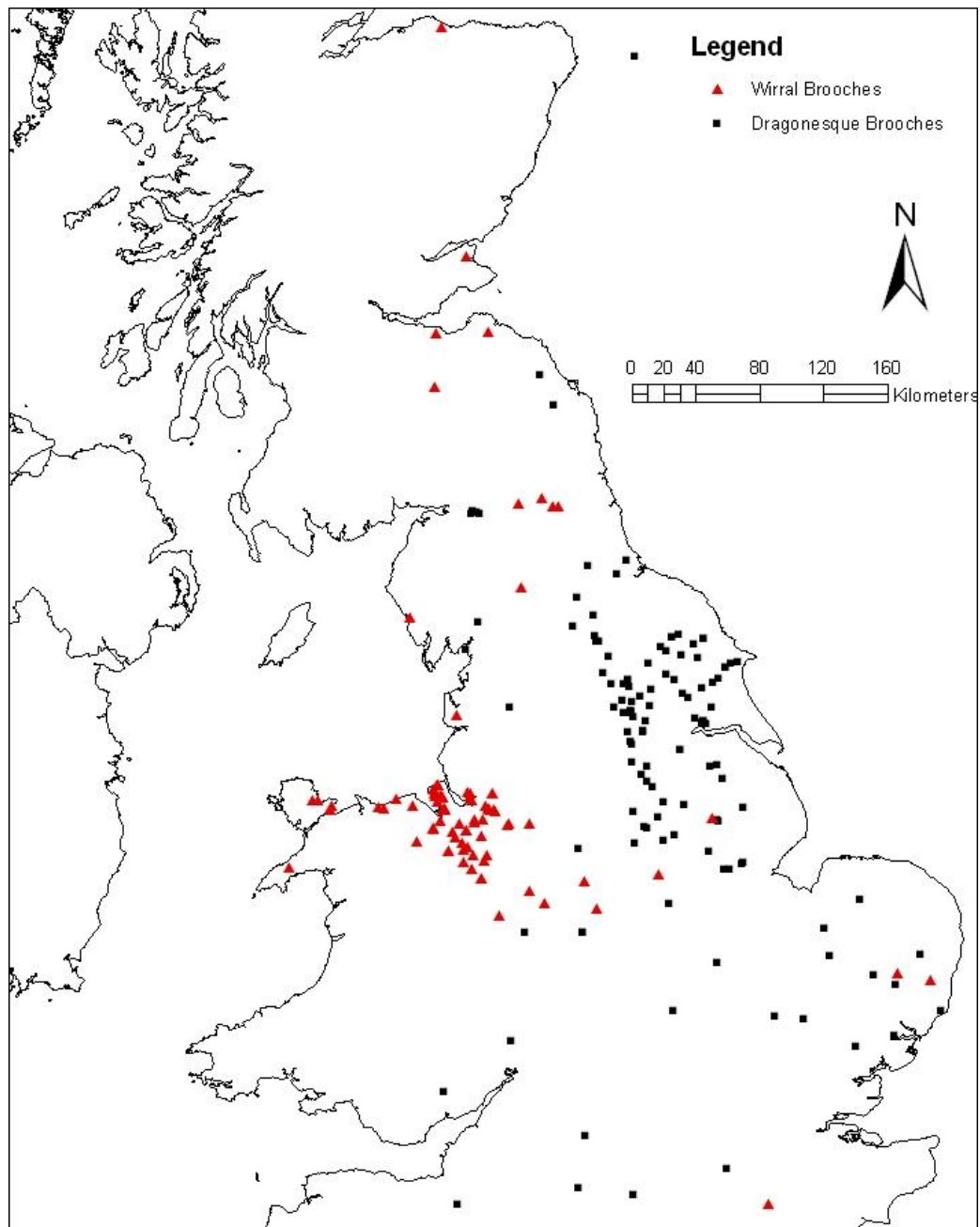
35 examples

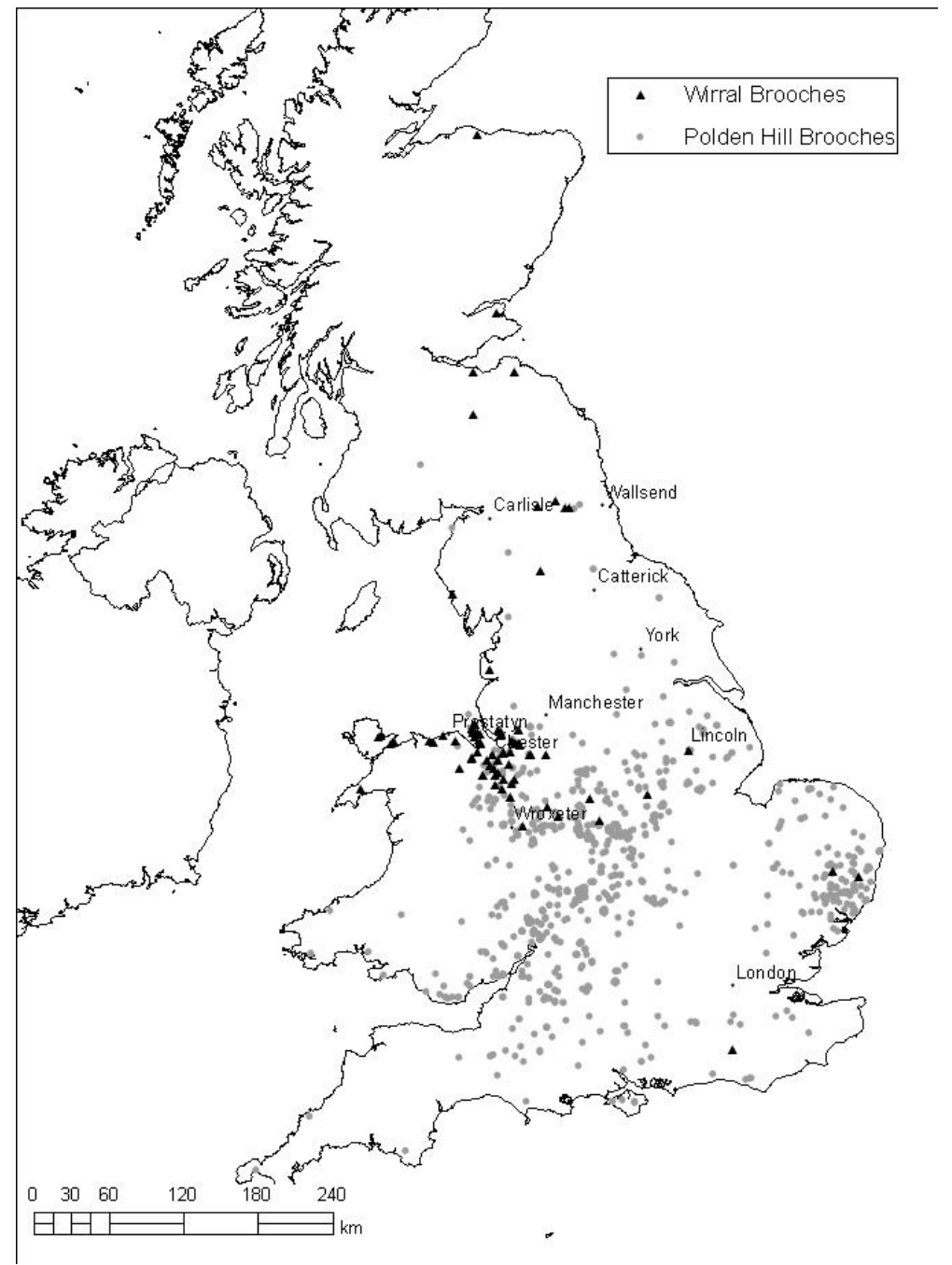
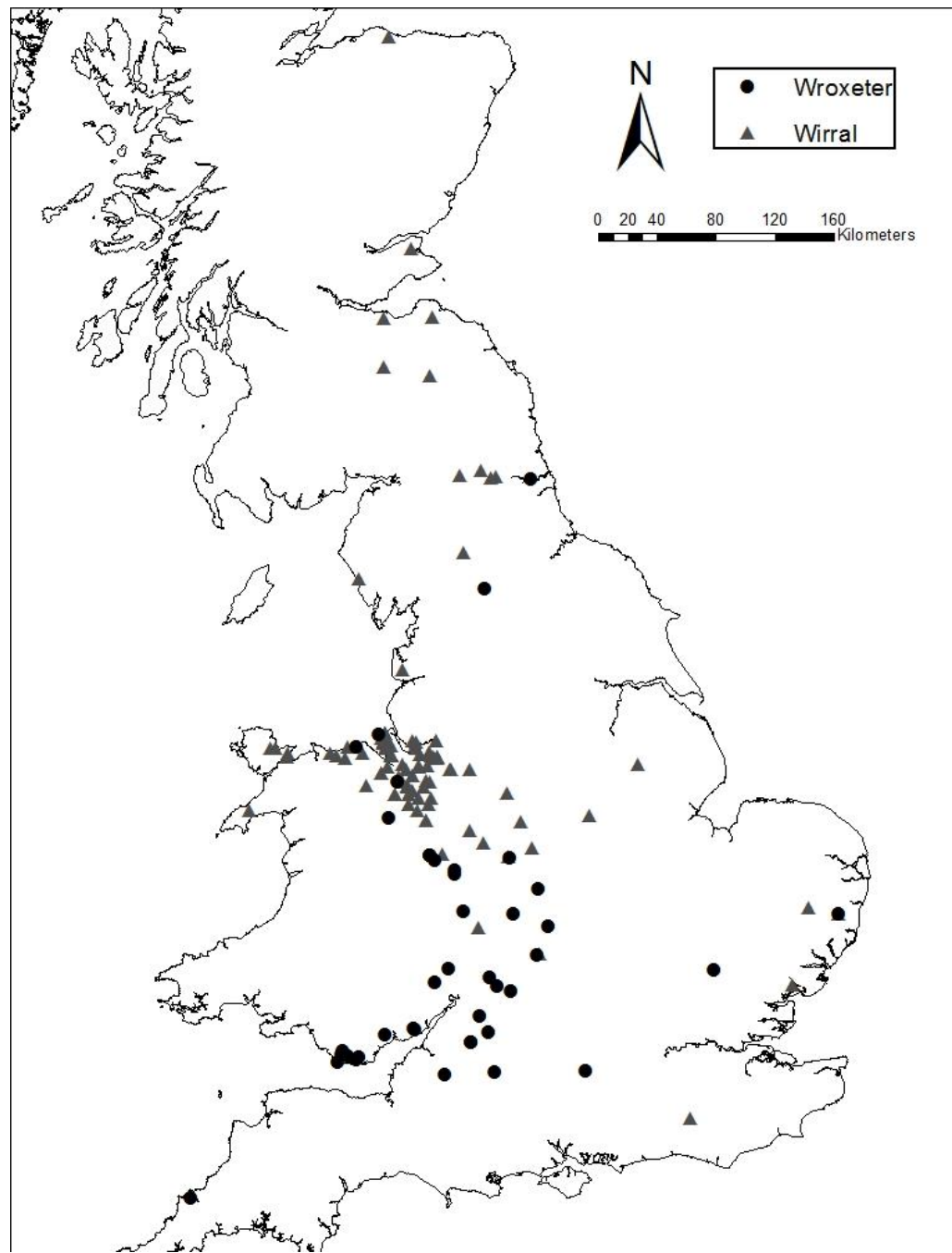


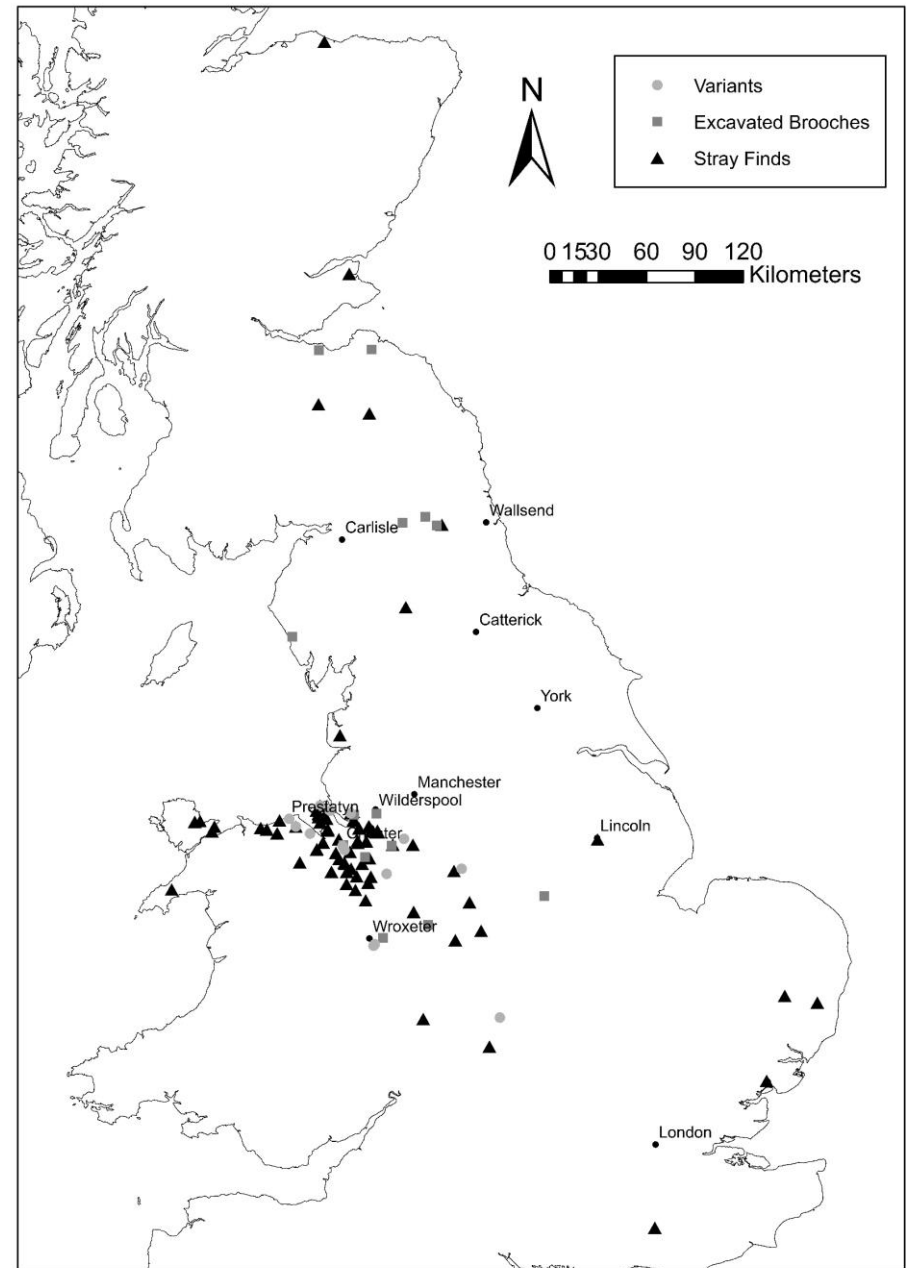
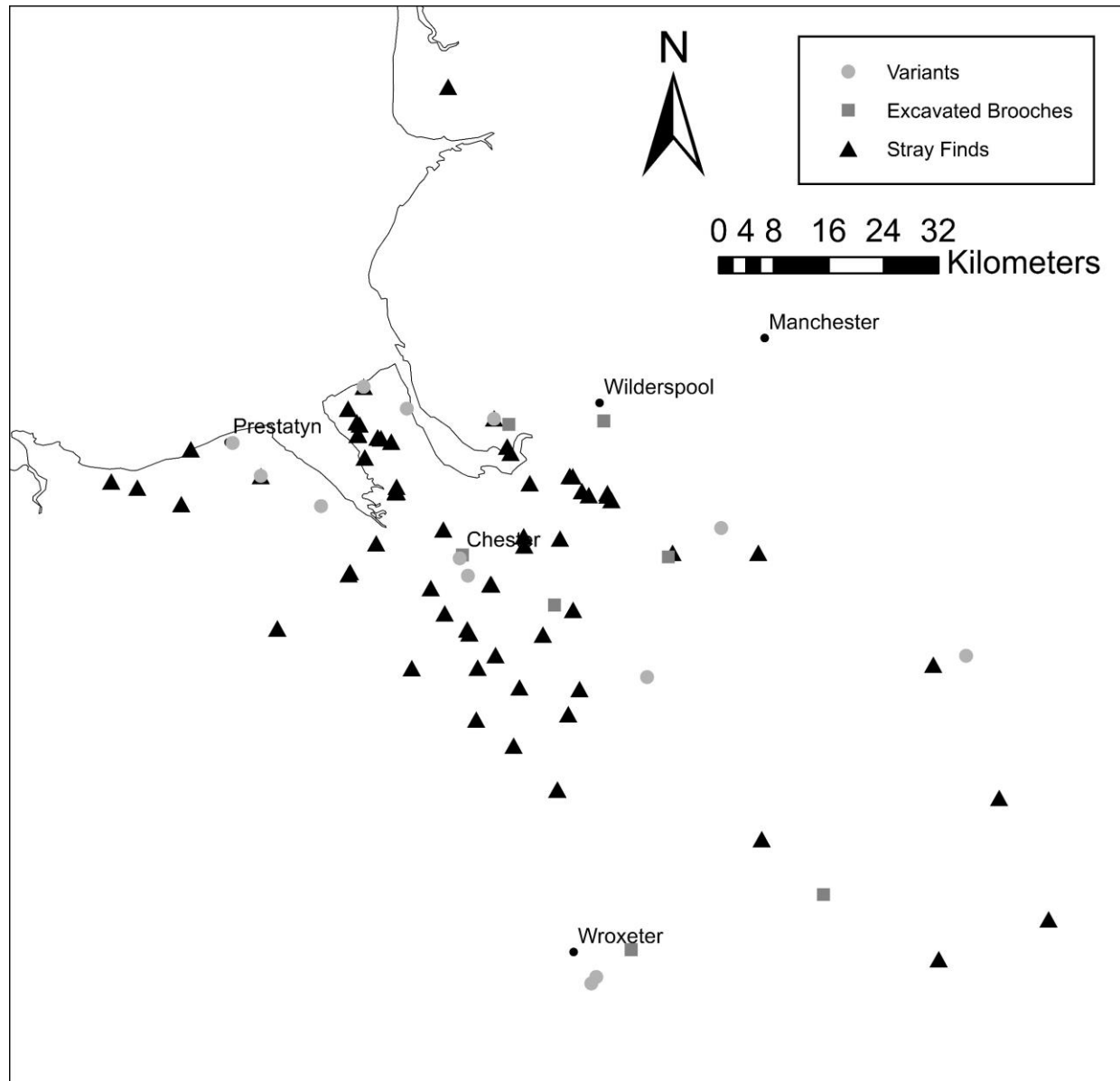
2012
117 examples





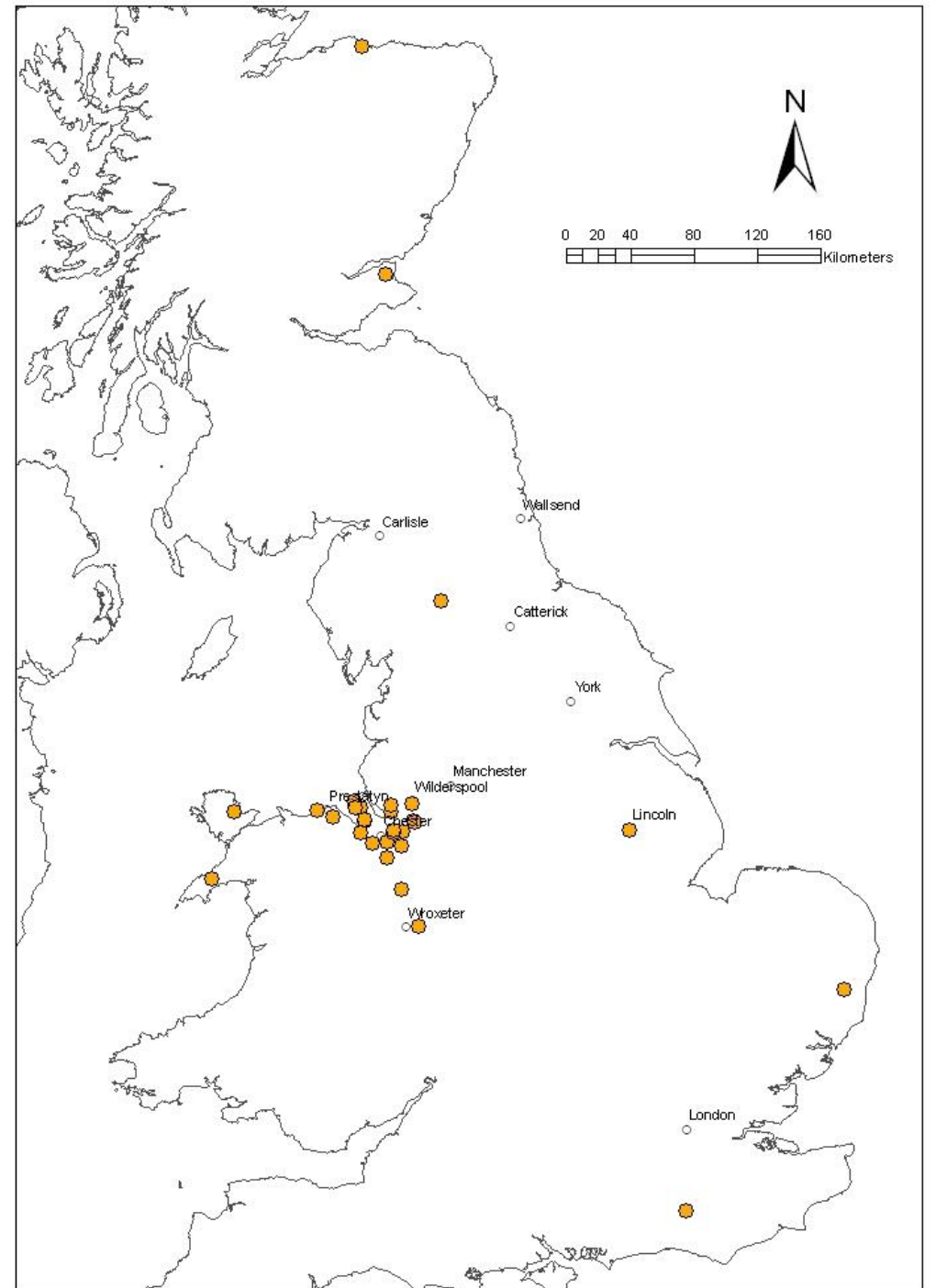


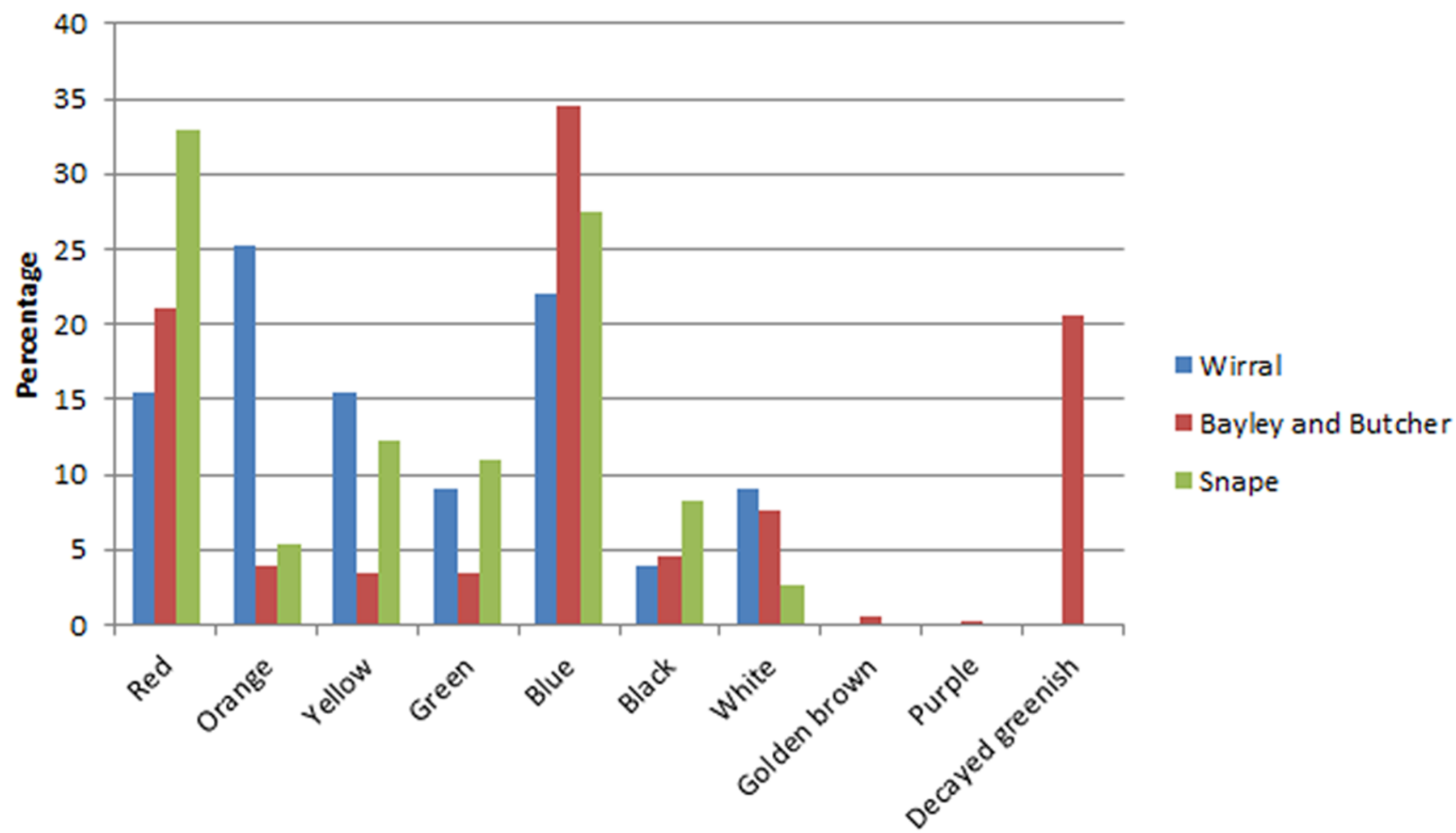




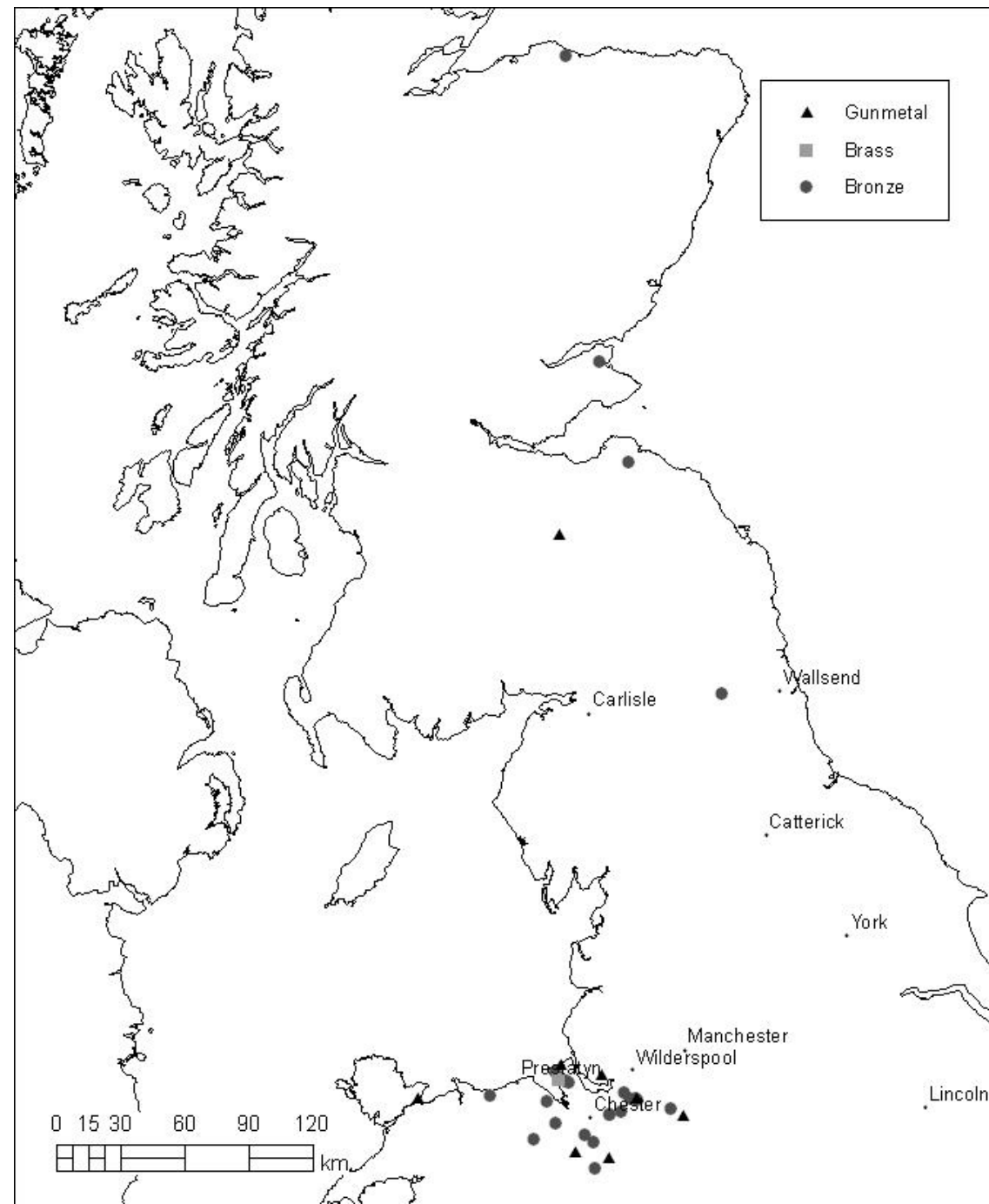
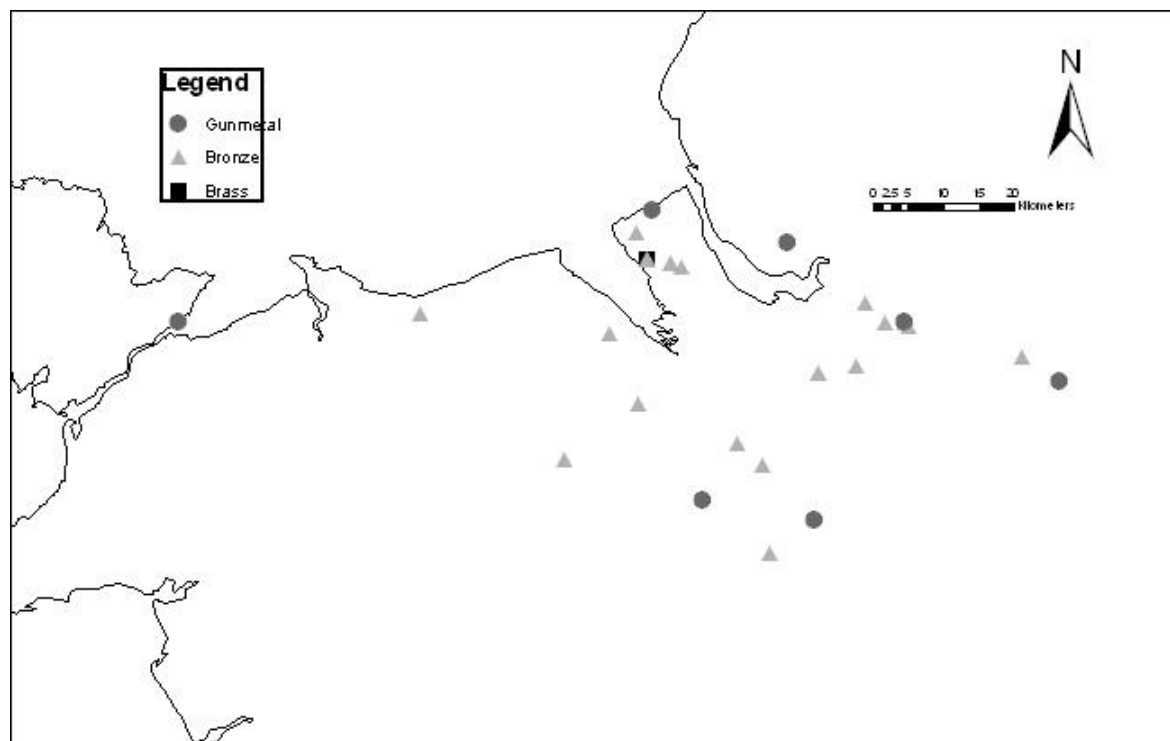
Scottish Indigenous	Military	Outliers
26. Edinburgh Castle, Midlothian	17. Brough-Under-Stainmore,	6. Ardingley, Sussex
79. Peebles, Borders	19. Chester, Cheshire	14. Brailes, Warwickshire
83. Pusk, Fife	20. Chesters, Northumberland	27. Eye, Suffolk
92. Stonewells, Moray	22. Corbridge (Thornborough High Barns), Northumberland	31. Fingringhoe, Essex
102. Traprain Law, East Lothian	23. Corbridge, Northumberland	43. Hindlip, Worcestershire
	76. Newstead, Borders	49. Lincolnshire
	84. Ravenglass, Cumbria	78. Peasenhall, Suffolk
	86. Ribchester, Lancashire	
	103. Vindolanda, Northumberland	

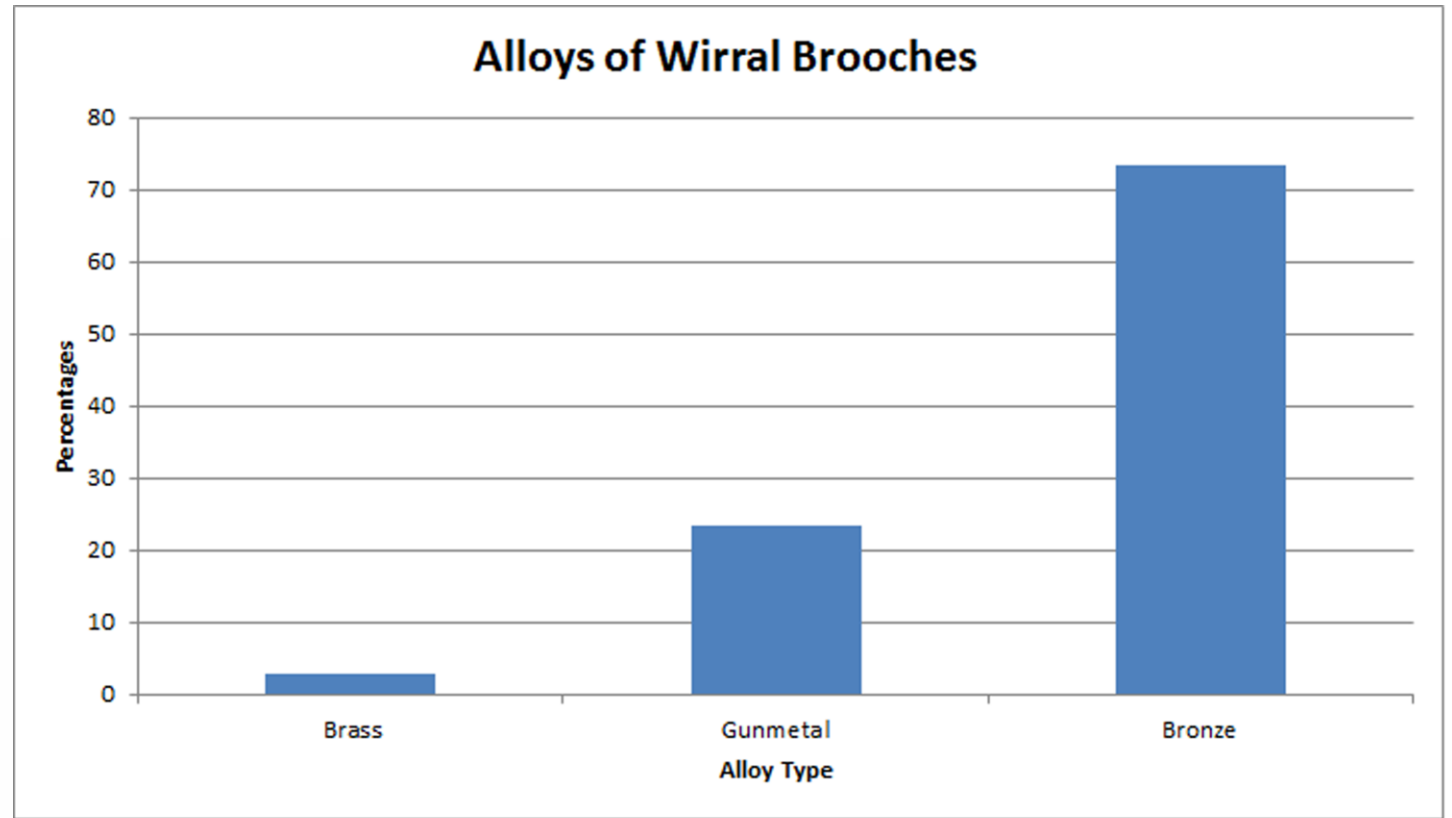
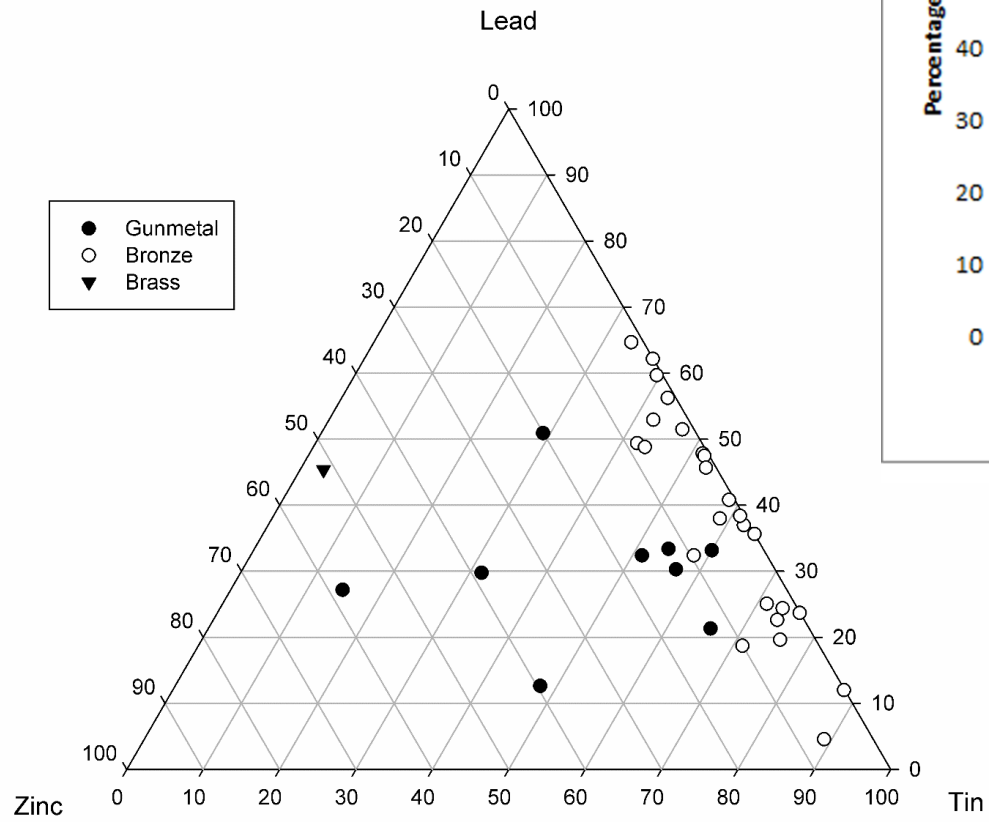
Orange enamel

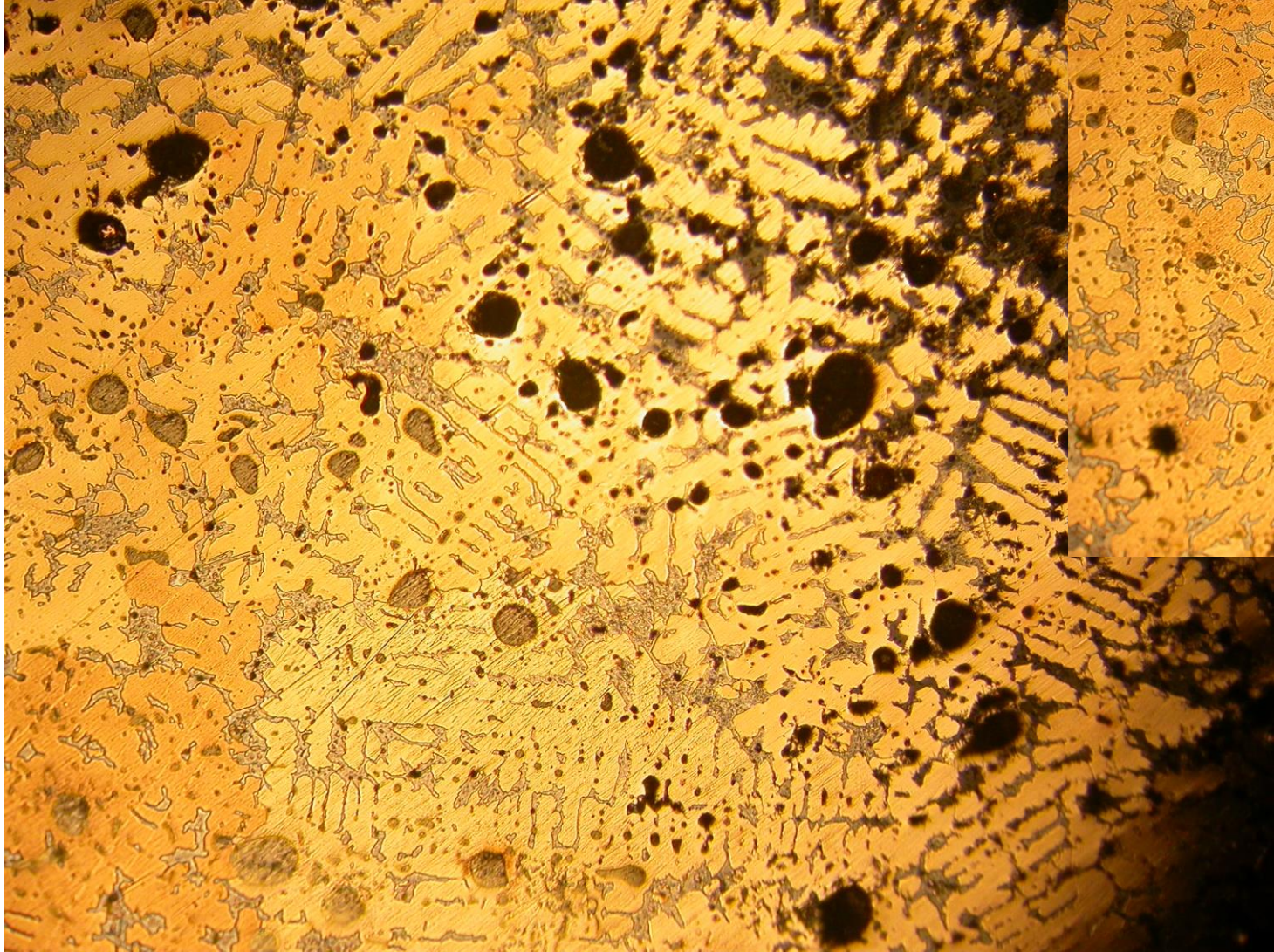




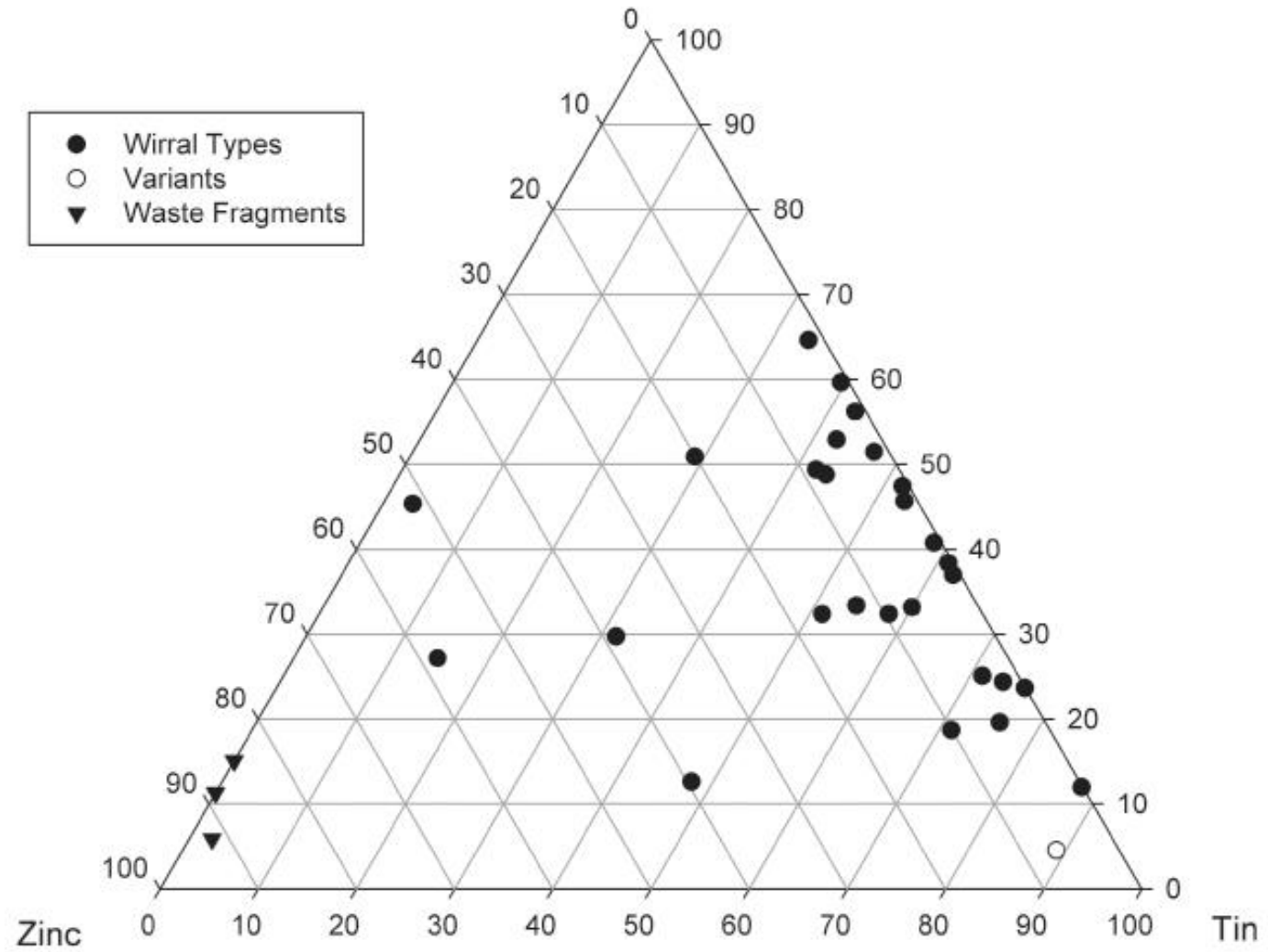
Alloy distribution







Looking for a
manufacturing
site at Ness

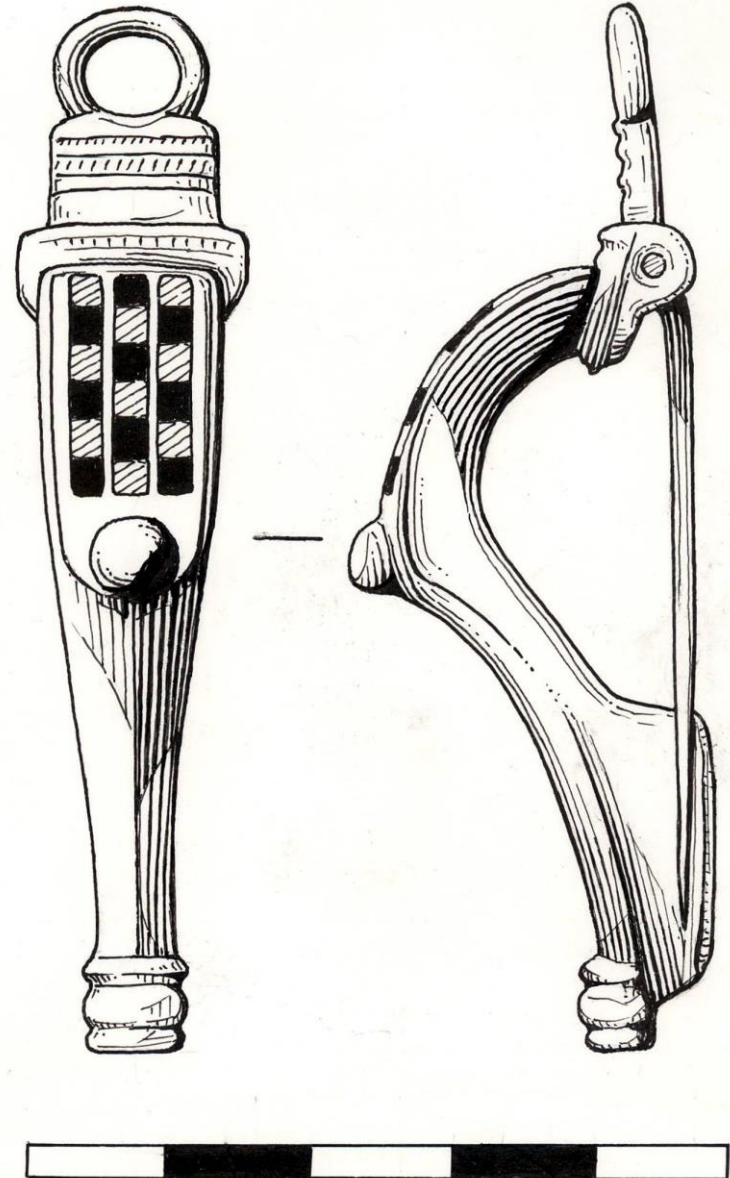


Variants



Conclusions

- Local development
- Specific choice in colour
- 2nd century in date
- Rural market
- Place of manufacture unknown



Thanks

- All metal detectorists who recorded their finds and allowed them to be analysed
- Matthew Ponting for the analysis
- Museums for allowing the analysis
- Rob Philpott for letting me steal his research topic
- My MLitt supervisors Ian Haynes and Lindsay Allason-Jones