

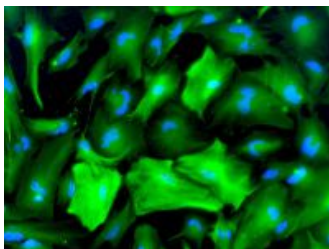


## Research News from across the University - February 2020

### WHAT'S NEW



[Soil 'as important as air and water'](#) Professor Chris Collins recommends in the NCC annual report



['Passive' brain cells play a key role in memory](#) - reports Dr Mark Dallas in an article in The Conversation



[Six curious facts about smell](#) by flavour expert Dr Jane Parker in The Conversation



[The civil service doesn't just need more scientists - it needs a decision-making revolution](#) Dr David Rose discusses in The Conversation



[Forecasters should 'look higher up'](#) a recent publication co-authored by Professor Andrew Charlton-Perez highlights the importance of the stratosphere to forecasting extreme conditions at the Earth's surface

### WHAT'S ON

**CELM Public Lecture**  
**20 February**

[Understanding children's reading: At school and at home](#)



**Public Lecture**  
**26 February**

[The Self Delusion - How we are all connected and why that matters](#)



**Swindon Science Festival**  
**21-22 February 2020**

[The University will be exhibiting under the environmental science theme](#)



[Questions non-execs should ask before joining the board](#) Professor Nada Kakabadse from Henley Business School writes in the Board Agenda



[Reading 2050 - our CONNECTED alumni magazine's feature article on the vision for the town](#)



**MORE EVENTS**

**MORE NEWS**

**FEATURE**

### Research support at Reading

[Research and Enterprise Services](#) has an updated website – use it to find out about:

- [Funding](#) sources, deadlines and requirements – including [lists of current and recurring](#) funding calls, help with [preparing an application](#), and [costing your proposal](#)
- [Post-award support](#) – setting up your grant, contracts, [data management](#), [reporting](#),
- Support with [Impact](#), [Intellectual property and patents](#), and [Consultancy](#).

Don't forget to tell them the outcomes and feedback of your funding submissions so they can ensure the learning benefits everyone.

Your Research Development Manager will also keep you updated on the latest policy and advice – such as the recent news that UKRI no longer requires a pathways to impact plan for all funding applications. Impact will still be one of the [grant assessment criteria](#) and applicants must consider how they will achieve impact throughout their projects and include this as part of the case for support.

RES would like to understand better how people want to find out about funding opportunities – please take 5 minutes to [complete this short survey](#) to inform future support in this area.

**SPOTLIGHT**



**Professor Dominik Zaum (Politics and International Relations)** has been appointed to the Department for International Development's Science Advisory Group. Professor Zaum's expertise and experience will help ensure that the group continues to provide the Department for International Development (DFID) with the best independent scientific advice.



Our proposal to exhibit at the [Royal Society's Summer Exhibition 2020](#) has been **approved** following a competitive selection process. This exhibition is the UK's highest profile scientific public engagement event, and will showcase work led by **Professor Hannah Cloke (Geography and Environmental Science)** on flood forecasting.



---

**Subscribe**

*Copyright © 2019 University of Reading. All rights reserved.*

You are receiving this newsletter as an employee of the University of Reading

[research@reading.ac.uk](mailto:research@reading.ac.uk)

**Our mailing address is:**

Research Communications and Engagement, University of Reading  
Whiteknights House, Whiteknights PO Box 217, Reading, Berkshire RG6 6AH

[unsubscribe](#)